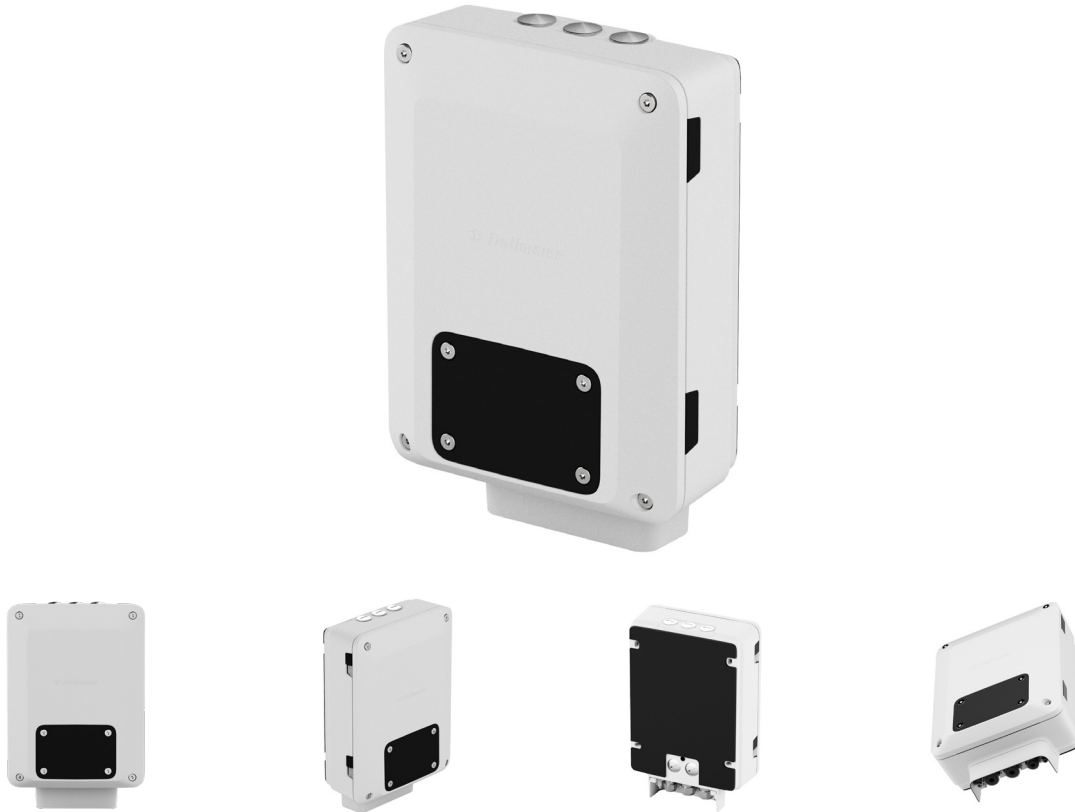


Mountera® Box with PSU

Mountera® Box with 260 W power supply unit for the supply of camera systems on site, weather-protected IP 66 housing, compact, fanless and energy-efficient

The innovative **Mountera® Quick-Lock System** is a completely new concept for **quick and easy installation** of the latest camera and Panomera® systems. The Mountera® system consistently continues the **elegant design line** of the camera systems, allowing visually appealing and yet **robust installations without visible cables**. The comprehensive system offers a wide range of **mounting options** and, in combination with the power supply or recording on site, it is also attractive for its **discreet installation that is reduced to the essentials**.



Power supply

The Mountera® Box with PSU is designed for the power supply of Panomera® systems and cameras directly at the installation site. The robust power supply unit outputs up to 260 W and thus allows the supply of two Panomera® systems.

Direct mounting

The Mountera® Box can be combined with the various brackets of the Mountera® Quick-Lock System, which allow direct mounting of Panomera® systems or cameras on the box. This results in a robust and weatherproof overall system with a discreet installation that is reduced to the essentials.

Internal cable routing

The Mountera® Box is optimized for the combination with the internal cable routing of the Mountera® Brackets. The connecting cables can be led into the interior of the Mountera® Box via a weatherproof sleeve. This makes the entire system stand out due to its harmonious and safe appearance without any visible cables.

Finish

Like the camera systems and brackets, the Mountera® Box is made of robust aluminium. Its chromated surface has a signal white (RAL 9003) powder coating, which has been tested for seawater resistance according to DIN EN 60068-2.

Mounting

The Mountera® Box can be installed directly on a wall or ceiling or in combination with a Mountera® Pole Adapter on a pole.



Features Hardware


- Mountera® Box with robust 260 W power supply unit
- Adapter for Mountera® Ceiling Bracket
- Adapter for mounting on a pole




Mountera® Box with PSU

Mountera® Box with 260 W power supply unit for the supply of camera systems on site, weather-protected IP 66 housing, compact, fanless and energy-efficient

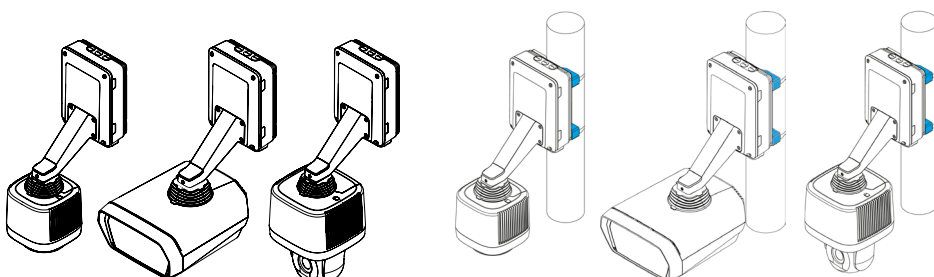
Box	
007054	 <p>Moutera® Box with PSU Moutera® Box with power supply unit, 48 V DC, 5.4 A, 260 W, IP66, white</p>
007519	 <p>Moutera® Box Moutera® Box, empty housing, IP66, white</p>

Bracket	
006979	 <p>Moutera® Wall Bracket Moutera® bracket for the installation of camera systems on walls or on a Moutera® Box, Quick-Lock System included, robust aluminium construction, internal cable routing, vandal-resistant, powder-coated, white</p>
006980	 <p>Moutera® Ceiling Bracket Moutera® bracket for installation of camera systems on ceilings, Quick-Lock System included, robust aluminium construction, internal cable routing, vandal-resistant, powder-coated, height 150 mm, white</p>

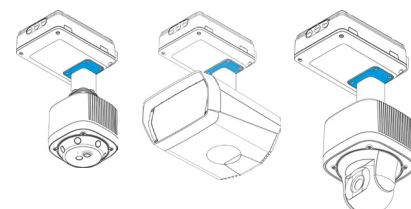
Cable Set	
007428	 <p>Moutera® Cable Set C Preassembled cable set for the connection of a camera system to a Moutera® Box, 1x cable seal, 1x cable power supply/grounding, 1x cable network (copper RJ45), each with matching plug, UV-resistant and flexible, length 80 cm</p>

Media Converter	
007732	<p>Mounting of a Media Converter Mounting of a media converter in a Moutera® Box with PSU, cabling, test, acceptance and approval included</p>
006290	 <p>Microsens Media Converter Gigabit Ethernet converter for conversion from copper to fiber optic cabling, 1x 100/1000Base-T RJ45 port (PoE+) to 1x 100/1000Base-X SFP port, suitable for mounting in a Moutera® Box with PSU, (mounting in a Moutera® Box with SRS not possible)</p>
006291	 <p>Microsens SFP Module Singlemode Gigabit Ethernet SFP Transceiver Singlemode, 1000BASE-LX/LH optical port for fiber cabling (1,310 nm, 10 km)</p>
006360	 <p>Microsens SFP Module Multimode Gigabit Ethernet SFP Transceiver Multimode, 1000BASE-SX optical port for fiber cabling (850 nm, 550 m)</p>

- Included in delivery of the Moutera® Box
- Adapter for the installation of a Moutera® Box on poles with 100 - 300 mm diameter, without band clamps, white



- Included in delivery of the Moutera® Box
- Adapter for the conversion of a Moutera® Ceiling Bracket, white



Mountera® Box with PSU

Mountera® Box with 260 W power supply unit for the supply of camera systems on site, weather-protected IP 66 housing, compact, fanless and energy-efficient

Electrical Data	Mountera® Box with PSU	Mountera® Box
Input voltage	100-240 V AC \pm 10%, 50/60 Hz	--
Output voltage	48 V DC	--
Output current	5,4 A	--
Output power	260 W	--

Mechanical Data	Mountera® Box with PSU	Mountera® Box
Dimensions (W x H x D)	Approx. 254 x 390 x 122mm (10.0" x 15.4" x 4.8")	
Weight	Approx. 7.5 kg (16.5 lb)	Approx. 6.5 kg (14.3 lb)
Material	Aluminium	
Processing	Chromated	
Finish	Powder coating, tested for seawater resistance according to DIN EN 60068-2	
Color	Signal white (RAL 9003 ¹⁾)	

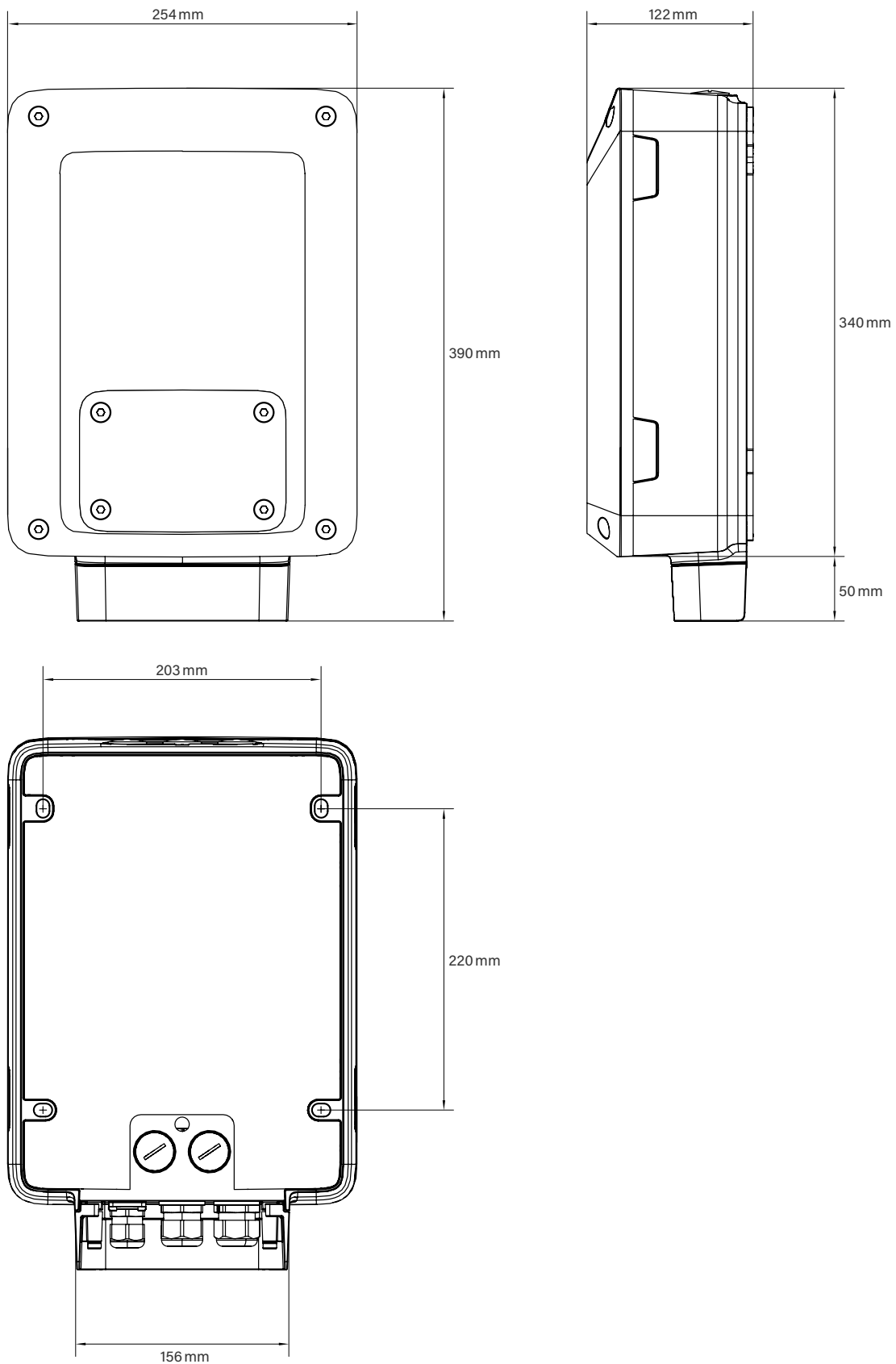
Environmental Conditions	
Installation sites	Indoor and outdoor
Temperature	-30°C up to +65°C (-22°F – 149°F)
Recommended temperature	+20°C up to + 25°C (68°F – 77°F)
Humidity	0 – 90% RH, non-condensing

Approvals and Certifications	
Type	CE, tested according to DIN EN 50130-4

1) The color of the powder coating may differ slightly from the RAL color indicated. This is due to production and does not constitute a defect.

Mountera® Box with PSU

Mountera® Box with 260 W power supply unit for the supply of camera systems on site, weather-protected IP 66 housing, compact, fanless and energy-efficient



Dallmeier electronic GmbH & Co.KG | Bahnhofstr. 16, 93047 Regensburg, Germany | +49 941 8700-0 | dallmeier.com

All trademarks identified by * are registered trademarks of Dallmeier electronic GmbH & Co.KG.

Third-party trademarks are named for information purposes only. Dallmeier electronic respects the intellectual property of third parties and always attempts to ensure the complete identification of third-party trademarks and indication of the respective holder of rights. In case that protected rights are not indicated separately, this circumstance is no reason to assume that the respective trademark is unprotected.

Specifications subject to change without notice. Errors and misprints excepted. Pictures may differ from the actual product.



See more.