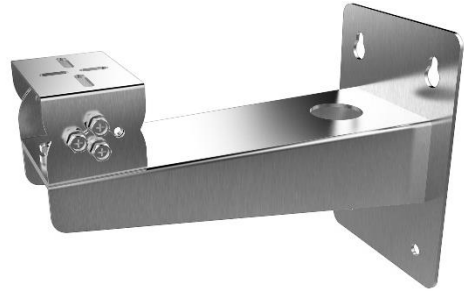


DS-1704Z-Y

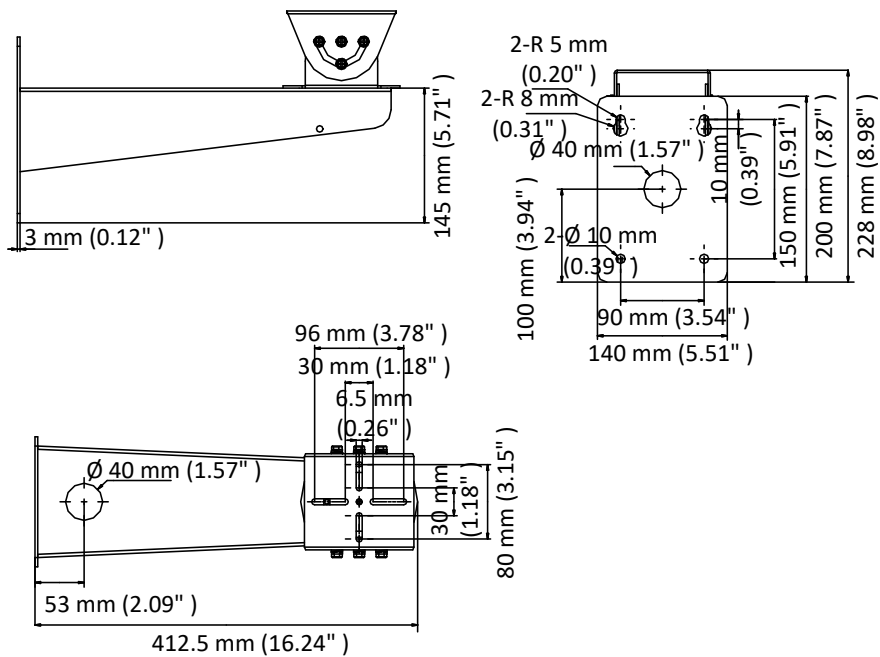
Wall Mount



Feature

- Stainless steel
- Adjustable tilt angle from -45° to 45° , and pan angle from -45° to 45°
- Cable hole design facilitates the cable routing

Dimension



Available Model

DS-1704ZJ-Y

Parameter

Model	DS-1704Z-Y
Parameters	Wall Mount
Appearance	Unpainted Stainless Steel
Material	SUS316L
Dimension	412.5 mm \times 140 mm \times 228 mm (16.24" \times 5.51" \times 8.98")
Weight	2160 g (4.76 lb.)

Note

- The mount should be installed on the flat surface.
- Waterproof rubber is necessary for the outdoor application.
- The wall should be capable of supporting at least 8 times as much as the total weight of the camera, and the mount.
- The mount's maximum load capacity is 10 kg (22 lb.).